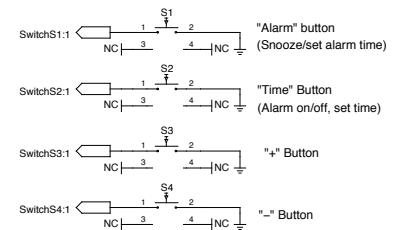
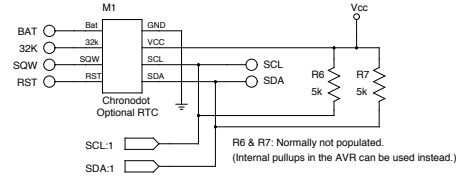
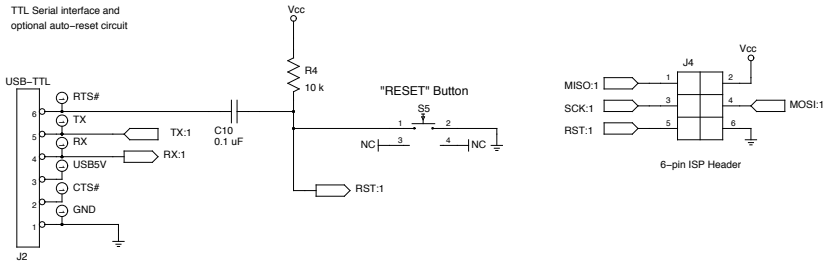
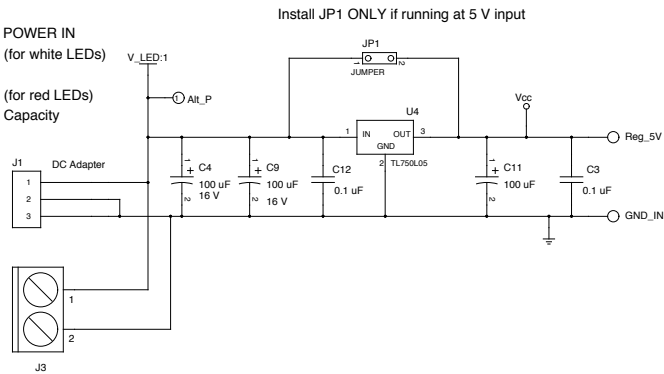


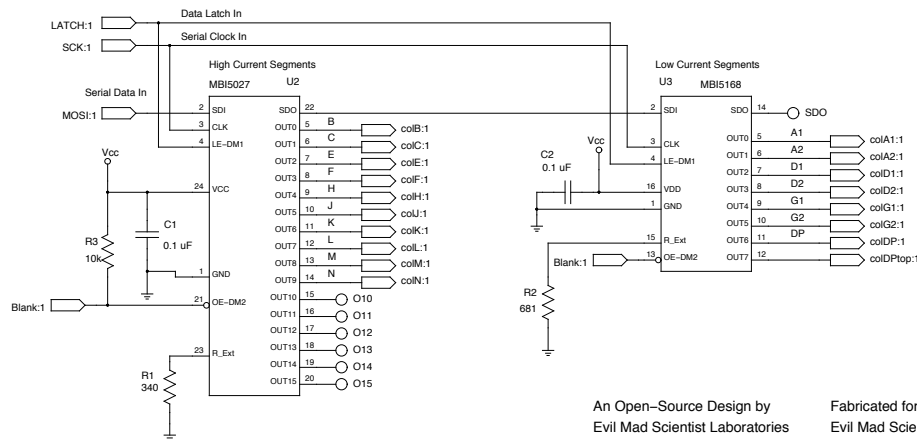
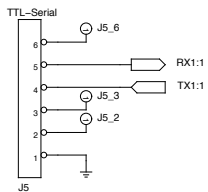
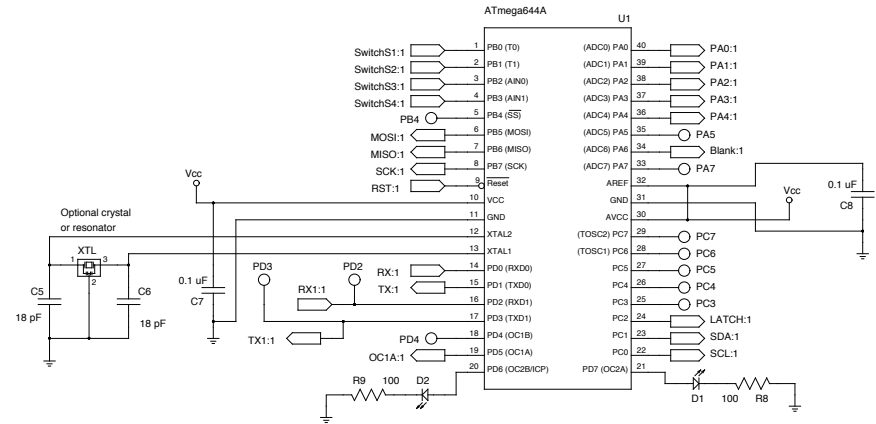
TTL Serial interface and optional auto-reset circuit



DC POWER IN
9 V (for white LEDs)
or
5 V (for red LEDs)
1 A Capacity



Install JP1 ONLY if running at 5 V input



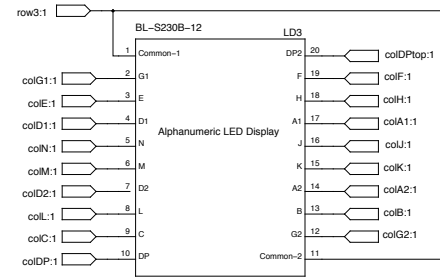
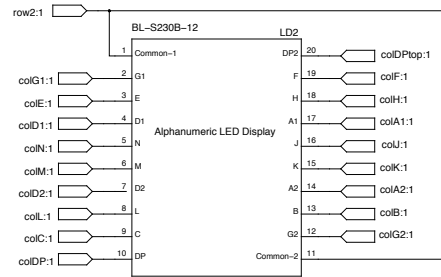
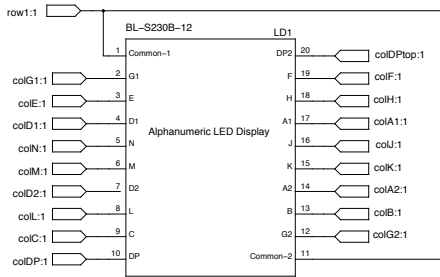
Copyright 2012, Evil Mad Science LLC
Distributed under the TAPR Open Hardware License
www.tapr.org/OHL

An Open-Source Design by
Evil Mad Scientist Laboratories
www.evilmadscientist.com

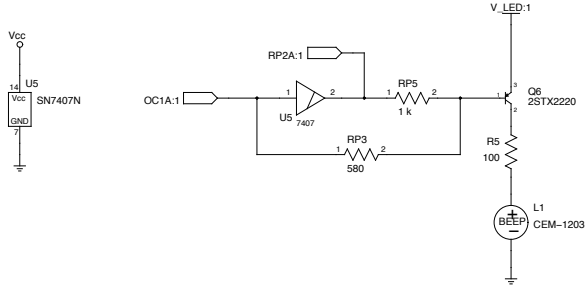
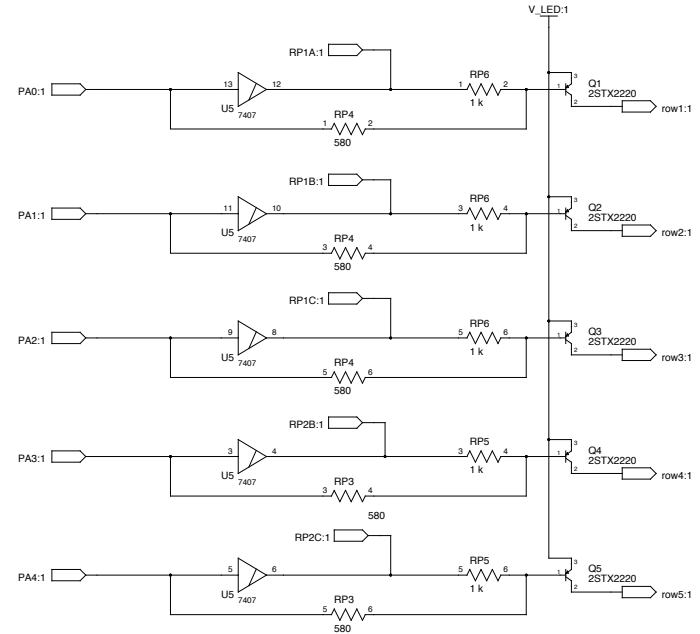
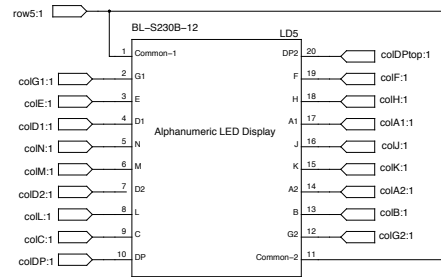
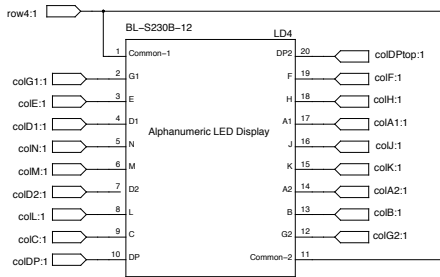
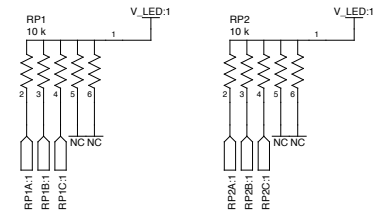
Fabricated for
Evil Mad Science LLC
shop.evilmadscientist.com

TITLE: "Five Letter Word" The Alpha Clock Five PCB		REVISION: C
FILE: fiveletterA.sch	DRAWN BY: Windell H. Oskay	
PAGE: 1 OF 2		

Note: Rev B (and newer) uses LED display type BL-S230B-13-UHR-12.
 These displays have a second decimal point "DP top,"
 connected to pin 20, rather than NC on pin 20.



RP1 and RP2: resistor packs.
 Populate only for WHITE version



For RED LED Display:
 Populate RP3, RP4
 DO NOT POPULATE U5, RP5, RP6.

For WHITE LED Display:
 Populate U5, RP5, RP6.
 DO NOT POPULATE: RP3, RP4

An Open-Source Design by
 Evil Mad Scientist Laboratories
www.evilmadscientist.com

Fabricated for
 Evil Mad Science LLC
shop.evilmadscientist.com

Copyright 2012, Evil Mad Science LLC
 Distributed under the TAPR Open Hardware License
www.tapr.org/OHL

TITLE: "Five Letter Word" The Alpha Clock Five PCB	
FILE: fiveletterB.sch	REVISION: C
PAGE: 2 OF 2	DRAWN BY: Windell H. Oskay